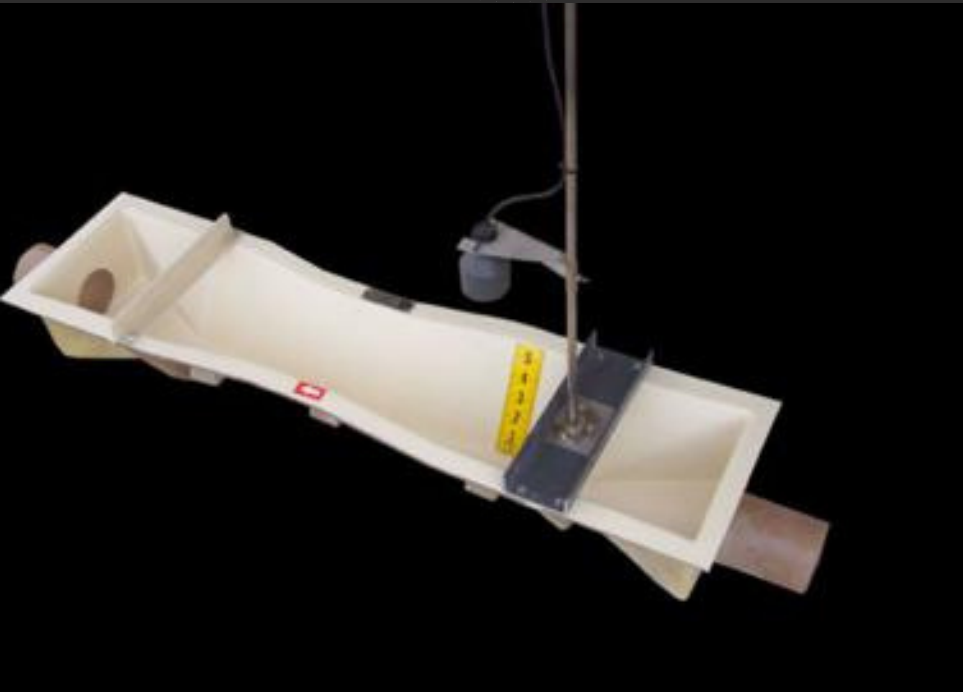


Fiberglass

60° - V Trapezoidal Flumes



VPC
FIBERGLASS



APPLICATIONS

- Agricultural Irrigation Systems
- Stormwater Runoff Monitoring
- Wastewater Treatment Plant Effluent Measurement
- Industrial Process Discharge Monitoring
- Environmental & Watershed Monitoring



PRODUCT DESCRIPTION

All Trapezoidal Flumes exhibit similar flow characteristics and have application advantages over other flumes and weirs. VPC offers a full line of standard flumes, along with countless custom structures used for open channel flow measurement.

Sizes are available to measure flows ranging from intermittent trickles to full canal flow.

Key Features of Trapezoidal Flumes

- Flat bottom from entrance to exit for improved head conversion
- Does not require a free-fall discharge for proper operation.
- Staff gauge and instrument mounting brackets located within flume and factory installed
- Natural shape of the flume mimics many earthen and concrete-lined ditches.
- Flat floor and sloping walls allow solids to pass through the throat without being trapped.

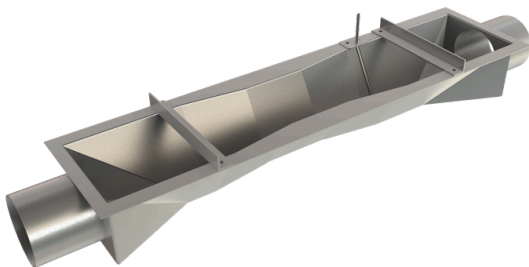
BENEFITS

- **Excellent low-flow accuracy** – Reliable measurement at very low flows where other flumes lose precision.
- **Wide Flow Range in a Single Structure** – Handles both low and high flows without needing multiple flume sizes or configurations.
- **Smooth Hydraulics** – Gradual trapezoidal shape reduces turbulence vs. restrictive flume designs.

Size	Min. Flow Range	Max. Flow Range
Small 60 Degree V	1 GPM	43 GPM
Large 60 Degree V	1 GPM	156 GPM
Extra Large 60 Degree V	1 GPM	663 GPM

CUSTOMIZATIONS AND OPTIONS

- **Staff Gauge:** available in various widths and markings, including flow data
- **Stilling Well:** integral or remote; 6", 8", 10", or 12" ID, with or without plug
- **Bubbler Tube:** stainless steel, 1/4" ID, integral to flume
- **Sampler Tube:** stainless steel, 3/8" ID, integral to flume
- **Inlet & Outlet End Connection:** integral or removable
- **Pipe Connection:** neoprene boot or ANSI pipe flange connection
- **Special Chemical Resistant Fabrication:** pH range of 1-14
- **Ultrasonic Transducer Bracket:** vertically adjustable
- **pH Sensor Cavity:** fabricated to fit most sensors
- **Wing Walls & Bulkheads:** custom fabricated to match channel width
- **Nesting Options:** standard or special designs
- **Energy Absorption Racks:** fixed or removable
- **Standard or Special Depths:** including surge boxes
- **Enclosed Flumes:** for odor control
- **Flume Covers:** grating, fiber sheeting, clear polycarbonate



PRODUCT PHOTOS



Need Help with a Project? Call Engineered Sales

